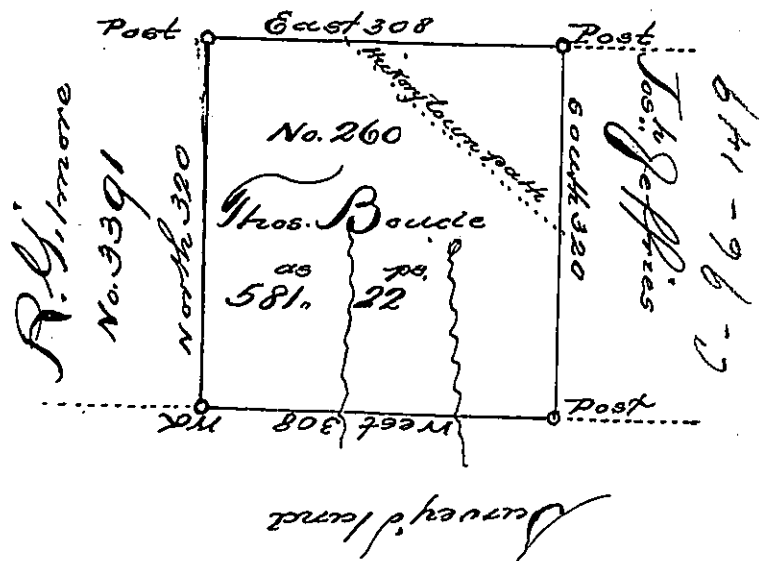
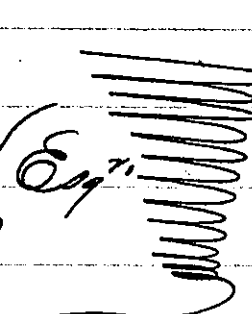


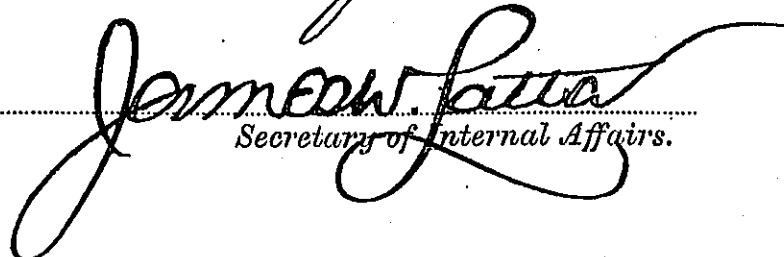
R. Gilmore, No. 3345



In pursuance of a Lottery Warrant No. 260, dated 10th May 1785, Surveyed the day of July 1793 to Thomas Boudle the above described tract of Land situate in Dist. No. 6 late Purchase Lycoming County, containing Five hundred Eighty one acres Twenty two perches & allowance of six p. Cent for Roads &c.


 Geo. Brodhead Esq.
 Surveyor General

IN TESTIMONY that the above is a copy of the original remaining on file in the Department of Internal Affairs of Pennsylvania, made conformably to an Act of Assembly approved the 16th day of February, 1833, I have hereunto set my Hand and caused the Seal of said Department to be affixed at Harrisburg, this seventh day of May, 1901,


 Secretary of Internal Affairs.